

AXIAL/FOOT CHECK VALVE FLANGED END

APPLICATION:

Mainly used for Fresh Water, Sea water, all kinds of oil, acid, alkaline liquid etc

GENERAL CHARACTERISTICS:

Range from ND50 up to ND350.
WRAS certificate for Drinking Water (Rubber and paint) available
Minimum head loss.
Epoxy paint 250 microns: RAL 5015.

WORKING CONDITIONS:

Pressure Ratings: 1.0Mpa; 1.6Mpa
Working Temperature: NBR -10C° +80C°
EPDM -10C° +120C°
Flow Media: Fresh Water, Sea water, all kinds of oil, acid, alkaline liquid

STANDARDS:

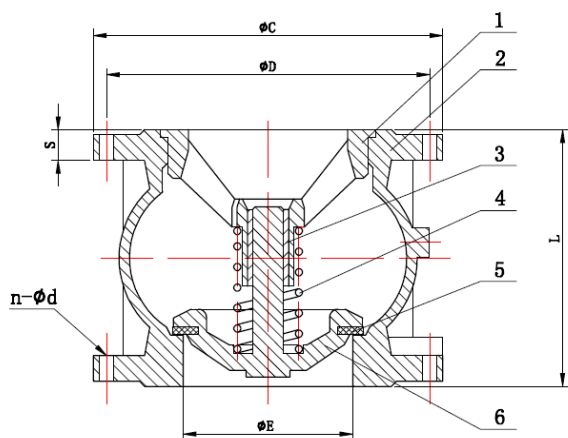
End Connections: PN10, PN16.
Comply with EN 558-1, ISO 5752 and EN 1092-2, ISO 7005-2 flange dimension.
Pressure test according to standards: API598 DIN3230 EN12266-1



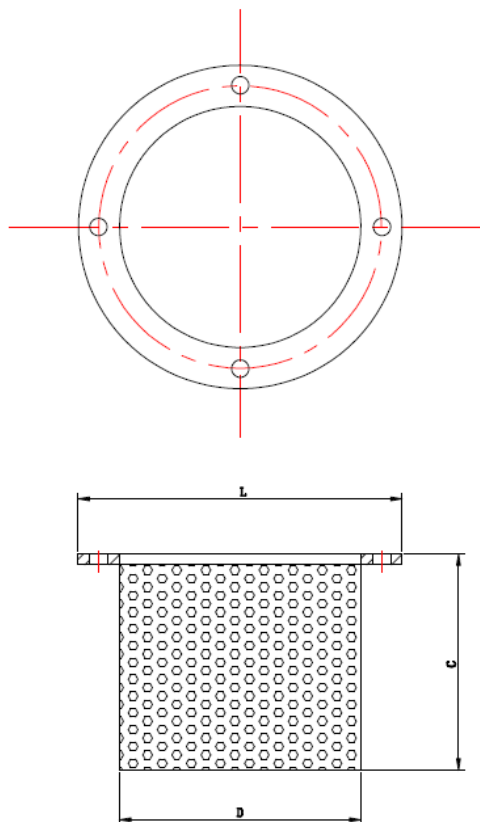
| ND | L | E | C | D | n-d | S |
|-------------|-----|-----|-----|-----|-------|----|
| 050(2") | 100 | 50 | 165 | 125 | 4-19 | 17 |
| 065(2-1/2") | 120 | 65 | 18 | 145 | 4-19 | 17 |
| 080(3") | 140 | 80 | 200 | 160 | 8-19 | 19 |
| 100(4") | 170 | 101 | 220 | 180 | 8-19 | 21 |
| 125(5") | 200 | 127 | 250 | 20 | 8-19 | 23 |
| 150(6") | 230 | 145 | 285 | 240 | 8-23 | 23 |
| 200(8") | 301 | 194 | 340 | 295 | 12-23 | 27 |
| 250(10") | 370 | 245 | 405 | 355 | 12-28 | 29 |
| 300(12") | 410 | 300 | 460 | 410 | 12-28 | 29 |
| 350(14") | 473 | 344 | 520 | 470 | 12-28 | 30 |

| ITEM | PART | MATERIAL |
|------|--------------|---------------|
| 1 | Guide | GJS400 |
| 2 | Body | GJL250/GJS400 |
| 3 | Guiding Stem | F4 |
| 4 | Spring | SS316 |
| 5 | Seal | NBR/EPDM |
| 6 | Disc | GJS400 |

**other materials aviable under request*



AXIAL/FOOT CHECK VALVE FLANGED END



| ND | L | C | D |
|----------|-----|-----|-----|
| 050(4") | 156 | 80 | 111 |
| 065(5") | 176 | 100 | 131 |
| 080(6") | 192 | 120 | 148 |
| 100(4") | 212 | 150 | 168 |
| 125(5") | 242 | 175 | 198 |
| 150(6") | 275 | 200 | 222 |
| 200(8") | 332 | 250 | 278 |
| 250(10") | 385 | 300 | 329 |
| 300(12") | 445 | 350 | 384 |

